

DATA SHEET

Sagent® Data Flow™ Solution

THE DATA MANAGEMENT SOLUTION THAT CONTAINS BOTH ETL AND BI CAPABILITIES



Summary

Built for both analysts and business users who need to efficiently integrate data from a variety of sources and store or perform analytics with the results. Sagent Data Flow Solution combines integration and analytical tools into a single user interface that is easy to use and understand.

Benefits

- Easy information retrieval from across the enterprise so you can prepare data for a variety of applications:
 - Business Intelligence
 - Location Intelligence
 - Customized Solutions
- Flexible and easy-to-use integrated visual displays allow you to see the data; visual automation helps you easily create operational processes
- Implementation without high IT overhead and training
- Does not require coding or knowledge of SQL or other coding languages

OVERVIEW

Business users and data analysts face two daunting obstacles to achieving accurate reports for making sound decisions. One is accessing the data. The other is manipulating the data to create meaningful reports. Sagent Data Flow Solution can quickly, easily and affordably provide both capabilities.

Flexible and Powerful Environment

Sagent Data Flow Solution from Pitney Bowes Business Insight is a powerful and flexible integration engine that brings together data from heterogeneous sources into a single view where you use a comprehensive set transformation tools to merge and cleanse the data for optimal value. Once your data is transformed, apply Sagent Data Flow Solution analysis tools to create meaningful information and useful reports. You gain better understanding of the critical data in your business and your users are empowered to make smart decisions based on real data.

Graphical Design Tools

Sagent Data Flow Solution is designed for both business and technical users. Its new and improved interface reduces the learning curve so that end users can master the solution more quickly than other BI tools. A powerful visual development environment helps you create sophisticated data transformations quickly and simply. You can always easily see your data at any stage of the development process. With this visual approach to the design and construction of plans (i.e., repeatable processes), you can create a data integration workflow and report more quickly and then save and retrieve your plans for future reuse or custom application.

Access, Transform and Analyze Data Faster

Sagent Data Flow allow users to rapidly access, connect, integrate and analyze data from a wide array of applications, databases and data files. It also helps users quickly and easily incorporate any combination of these data sources into a single process. While other systems require you to perform join functions within the database, Sagent Data Flow joins two or more sources in memory, making it easier to analyze or perform operations on data from multiple sources.

Supports Many Data Formats for Greater Efficiency

Access data anywhere across your organization regardless of the format. Sagent Data Flow Solution handles the widest varieties of data formats, from legacy applications to web-based technologies, including Mainframe, AS400/iSeries and Sagent™ DirectLink.

Sagent DirectLink enables organizations to extract, transform and convert their large enterprise application packages (ERP/BW) into intelligent decisions. Sagent DirectLink – a world class tool for:

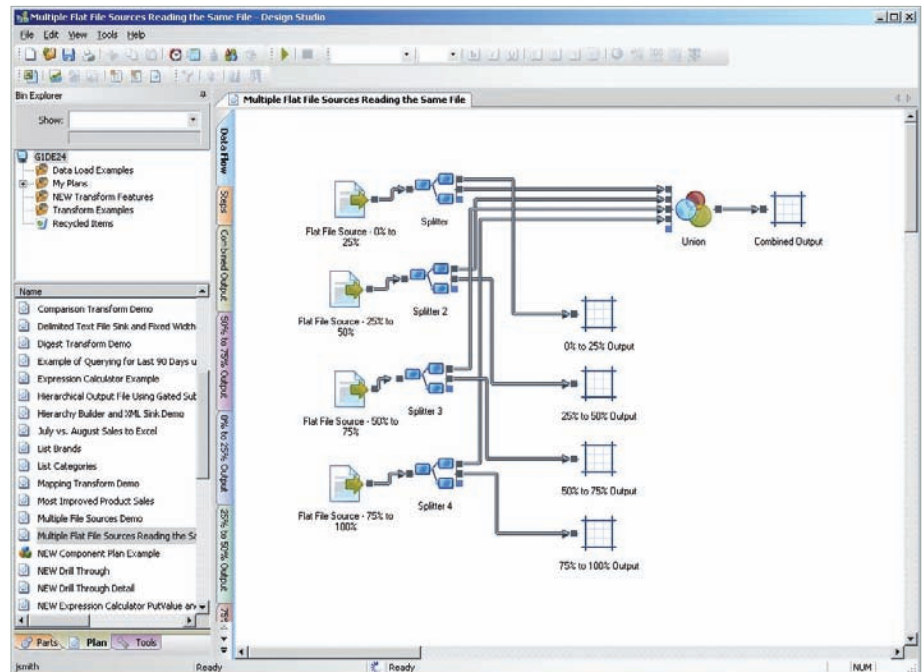
- SAP Business Suite
- SAP BI
- PeopleSoft Enterprise
- JD Edwards EnterpriseOne
- Siebel
- Oracle E-Business Suite

And Sagent Data Flow Solution natively handles all major RDBM systems, such as Oracle®, IBM® DB2, Microsoft SQLServer, and Sybase as well

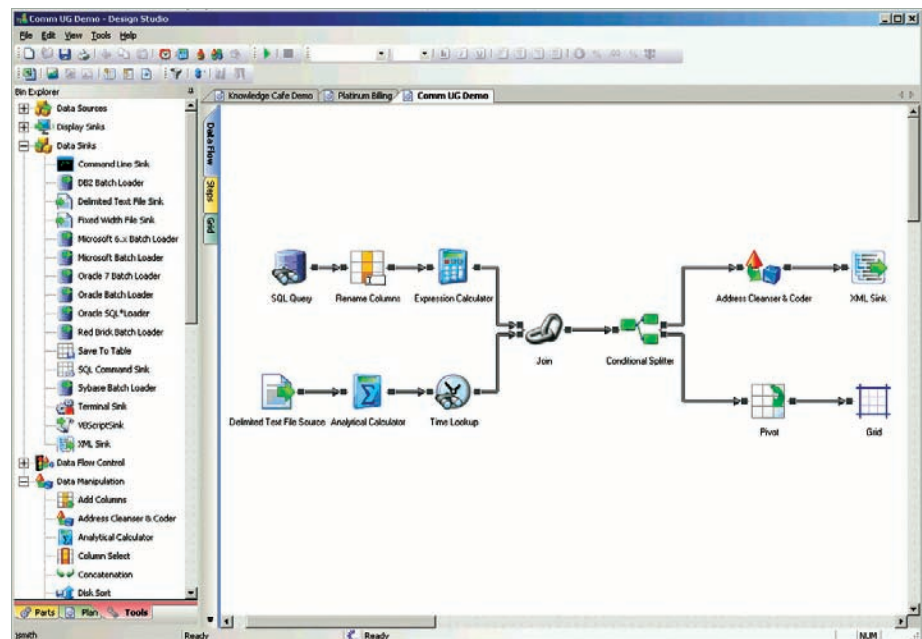
Sagent® Data Flow™ Solution

Features

- Built on a multi-threaded pipeline architecture for high performance and scalability.
- 64-bit processing power for more memory, increased performance, increased concurrent users, faster processing and larger data loads.
- Supports many data formats for greater efficiency, from legacy applications to web-based technologies. The ability to read data in its native format eliminates the need to write custom extraction programs.
- Reusable sub-components allow developed plan routines to be used in different places to reduce redundancies and rework. Plans may also be called through web services.
- Easy migration between development and production environments eliminate the need to create multiple plans, as well as the ability to work in physically partitioned arenas in large-scale applications.
- Extensive advanced library of data transforms speeds up development time.



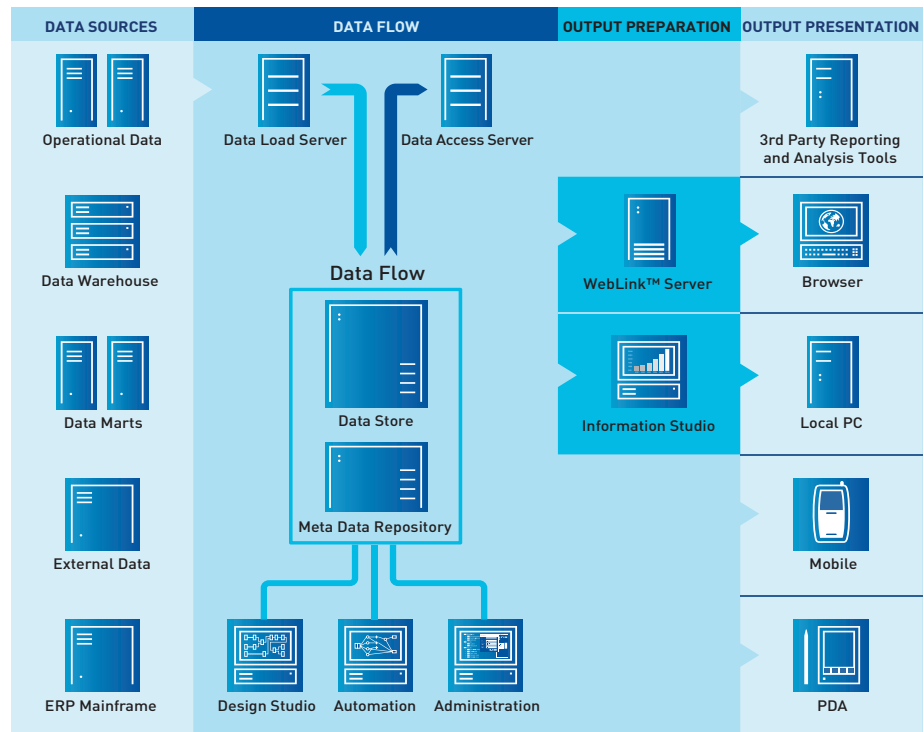
Multiple Flat File Sources Reading the Same File



Generating XML from Multiple Disparate Data Sources

WHAT IS A PLAN?

A "PLAN" IS A PROCESS THAT CONSISTS OF MANY STEPS, INCLUDING SUB-PLANS, WHICH ENCAPSULATE TRANSFORM FUNCTIONALITY FOR POTENTIAL RE-USE.



Sagent Data Flow Overview

as XML and most other major text-based data formats. Through our connector technology get access to over 100 legacy and operational systems. This ability to read data in its native format helps eliminate the need to write custom extract programs. By eliminating this time-consuming and expensive task, more projects come in on-time and under budget.

Not only does Sagent Data Flow Solution allow you to rapidly access, connect, integrate and analyze data from a wide array of applications, databases, and data files, but any combination of these data sources can be incorporated into a single process quicker and easier. Other systems require you to perform join functions within the database, but Sagent Data Flow Solution enables you to join two or more sources in memory, making it easier to analyze or perform operations on data from multiple sources.

Improved XML Handling

With the latest release, Sagent Data Flow Solution offers greater flexibility and performance when dealing with XML data sources and targets. Our

improved XML handling will allow users the flexibility to read and write data to almost any XML format, while still taking advantage of the full performance and functionality of the Sagent Data Flow environment.

64-Bit for Faster Processing

Sagent Data Flow Solution offers 64-bit support for Windows, Solaris, HP-UX Itanium and AIX, allowing for greater scalability and performance for high volume data problems. 64-bit processors address more memory, increasing your performance and offering greater scalability. Further, with the 64-bit processor, Sagent Data Flow Solution supports a higher number of concurrent users and instances, as well as faster processing and larger data loads.

Easier Migration Between Development and Production Environments

Why deal with hard-coded connection parameters? You don't have to with Sagent Data Flow Solution. You just point your plan to the desired environment, eliminating the need to

Sagent® Data Flow™ Solution

TSI

125 Eugene O'Neill Drive
Suite 105
New London, CT 06320
1.866.874.6277
sales@tsimapping.com
www.tsimapping.com

create multiple plans. If you are working in a large scale application, you can also work in physically partitioned arenas.

Reusable Sub-Component Support

Increase your productivity by reusing already developed modules or plan routine as you would a subroutine – a very user friendly feature for developers and business analysts (see WHAT IS A “PLAN”). It can be called but maintained and improved centrally. Why reinvent the wheel? Common functionality used in different places can be developed, maintained and managed centrally – which reduces redundancies that waste time and allow for error. This very efficient feature for developers now provides functionality to the business analyst for better reporting.

Improved Process Automation

With our most current release, we have updated our Sagent Automation product to provide better scalability and usability for automation of complex workflows within your data center.

Improved Performance and Functionality

Perhaps the most widely utilized Sagent Data Flow Solution functionality is what we call “Key Look-up.” And this too has been enhanced for greater productivity and ease-of-use. The memory and caching of Key Look-up has been reconfigured for stronger performance, enabling you to return multiple columns in one transform, simplifying your plan. New comparison operators have been added – which greatly reduces the number of manual modifications. And additional transforms such as Mark Duplicate Rows, Filtered Splitter, and Multi-Condition Filter enhance productivity and speed up the development process.

Automatic Documentation of Flow

Documentation is done automatically and generated into an HTML file. Developers are

no longer burdened with documentation. With automatic documentation the user experience is enhanced.

Plan Changes Automatically Tracked

Every data analyst knows that meticulous recording of plan changes are required. And that the record must not only identify who changed what and when, but how and what was changed. Sagent Data Flow Solution has removed the laborious manual effort and now documents plan changes automatically, so you can focus on plan creation and moving the plan forward to increase efficiency and productivity.

Additional Capabilities

Data Management and Business Intelligence have never been easier. With Sagent Data Flow Solution you have:

- Over 200 functions for general manipulation of data
- Add-on capabilities for advanced analytics, merge/purge, address standardization, and geospatial processing
- Built-in operational reporting
- Built-in OLAP analysis
- Web-based distribution of reports and OLAP
- Metadata reporting
- Process automation tools

An End-to-End Data Warehouse Solution

Sagent Data Flow is the only solution on the market to give you the ability to handle the creation, management and reporting off of your Data Warehouse all from a single tool with a single user interface. Solve complex data integration problems and apply that same capability to sophisticated BI applications without having to learn multiple tool sets.

CONTACT US TODAY FOR A DEMONSTRATION OF SAGENT DATA FLOW SOLUTION.

SPECIFICATIONS

To view a list of supported databases and connectivity software, please visit us at:

<http://www.pbinsight.com/products/data-management/business-intelligence1/sagent-data-flow/>